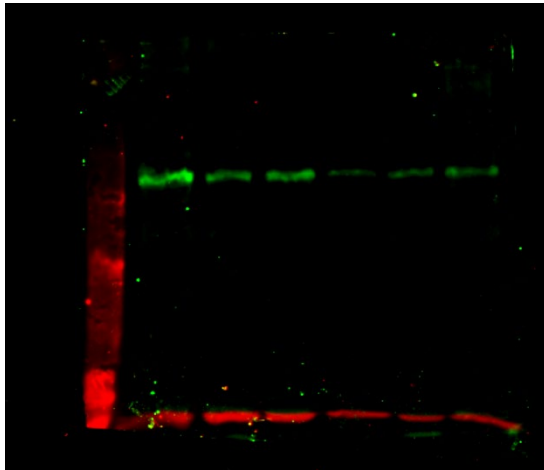


Original WB:

1. REELIN



Reelin in green (~180 kDa) (~42 KDa) and Actin in red

Line 1 Molecular weight ladder

Line 2 Control

Line 3 Diabetic

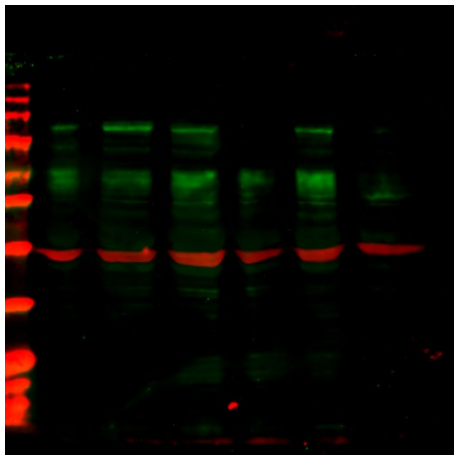
Line 4 Control

Line 5 Diabetic

Line 6 Control

Line 7 Diabetic

2. p-DAB1



p-Dab in green (~60 kDa) (~42 KDa) and Actin in red

Line 1 Molecular weight ladder

Line 2 Diabetic

Line 3 Control

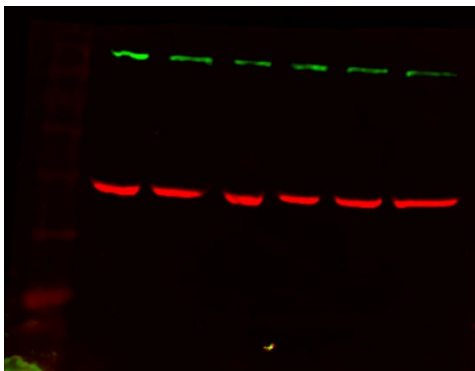
Line 4 Control

Line 5 Diabetic

Line 6 Control

Line 7 Diabetic

3. N-caderin



N-Caderin in green (~130 kDa) (~42 KDa) and Actin in red

Line 1 Molecular weight ladder

Line 2 Control

Line 3 Diabetic

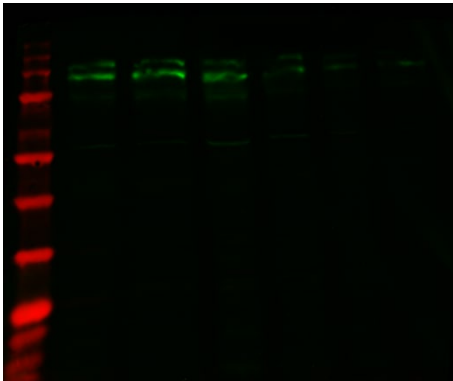
Line 4 Control

Line 5 Diabetic

Line 6 Control

Line 7 Diabetic

4. ApoER2: Actin was incubated separately, as no signal was observed when incubated together



VLDRL in green (~150 kDa) (~42 KDa) and Actin in red

Line 1 Molecular weight ladder

Line 2 Control

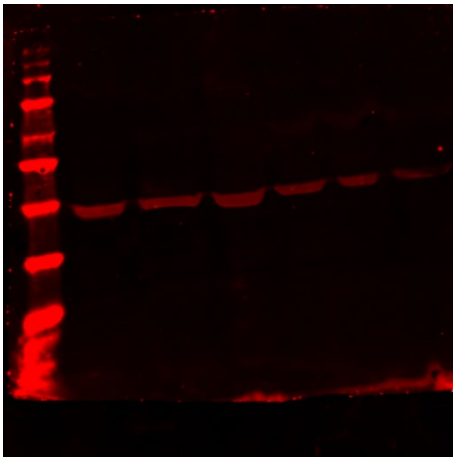
Line 3 Diabetic

Line 4 Control

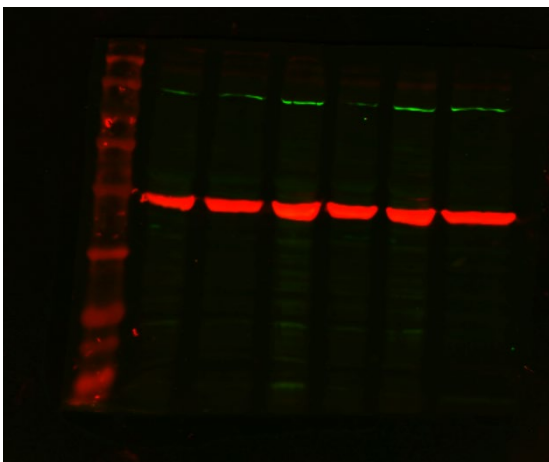
Line 5 Diabetic

Line 6 Control

Line 7 Diabetic



5. VLDLR



VLDRL in green (~100 kDa) (~42 KDa) and Actin in red

Line 1 Molecular weight ladder

Line 2 Control

Line 3 Diabetic

Line 4 Control

Line 5 Diabetic

Line 6 Control

Line 7 Diabetic

In all blots, the MW marker was the Trident Prestained Protein Ladder (High Range)

References Cat. No. GTX50875 from GeneTex

